

# IN YOUR SHOES: A Social Justice Lens

## Dialogue on Abilities, Access, and the Environment

How does the environment impact access and resources for persons with disabilities? Get some insights from UCSD student and staff participants as they share a glimpse of their experiences around access, social expectations, and policies. Presenters will also share their observations as they partner with one another to reflect on disability perceptions, triumphs, challenges, and surroundings.

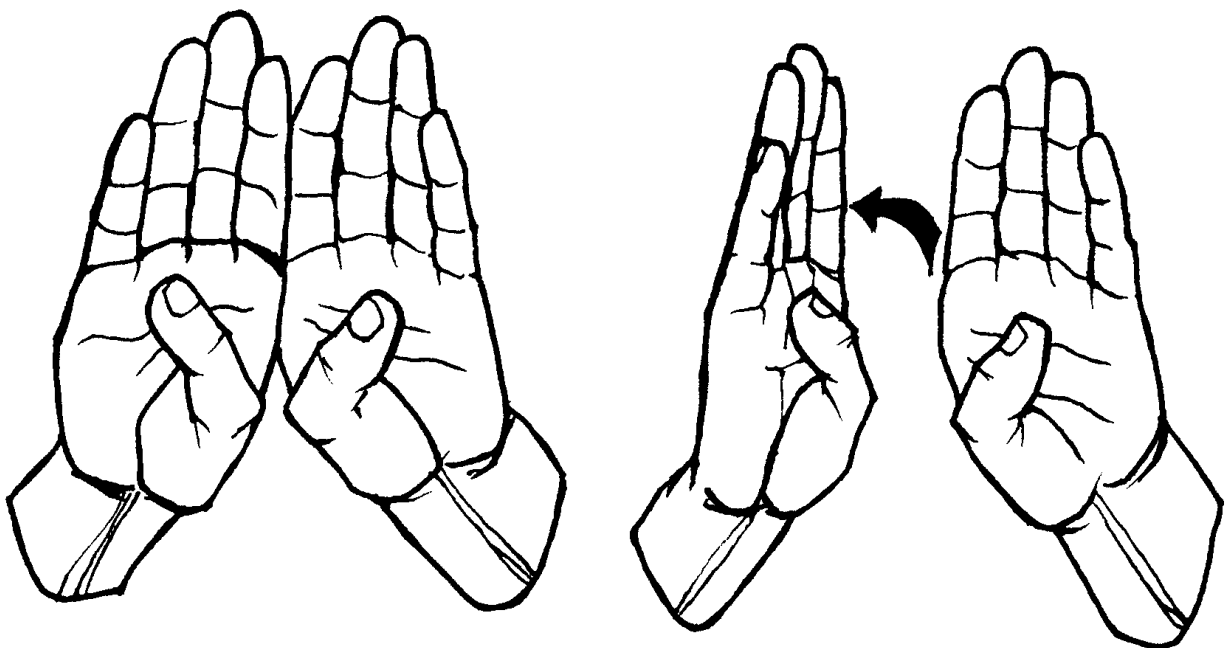
**Thursday, November 8, 2007**

**3:30 – 5:00 pm**

**Cross-Cultural Center**

**Free and open to the public. ASL interpretation provided.**

For addition information or to request an accommodation to enable your participation, please contact Barry Niman, [nimanb@ucsd.edu](mailto:nimanb@ucsd.edu) or 858-534-6743, ASAP.



*American Sign Language for "Open Door"*

### **Social justice definition**

Social justice includes a vision of society in which the distribution of resources is equitable and all members are physically and psychologically safe and secure. We envision a society in which individuals are both self-determining (able to develop their full capacities), and interdependent (capable of interacting democratically with others). Social justice involves social actors who have a sense of their own agency as well as a sense of social responsibility toward and with others and the society as a whole (Bell, 1997, p.1). *Teaching for Diversity and Social Justice*